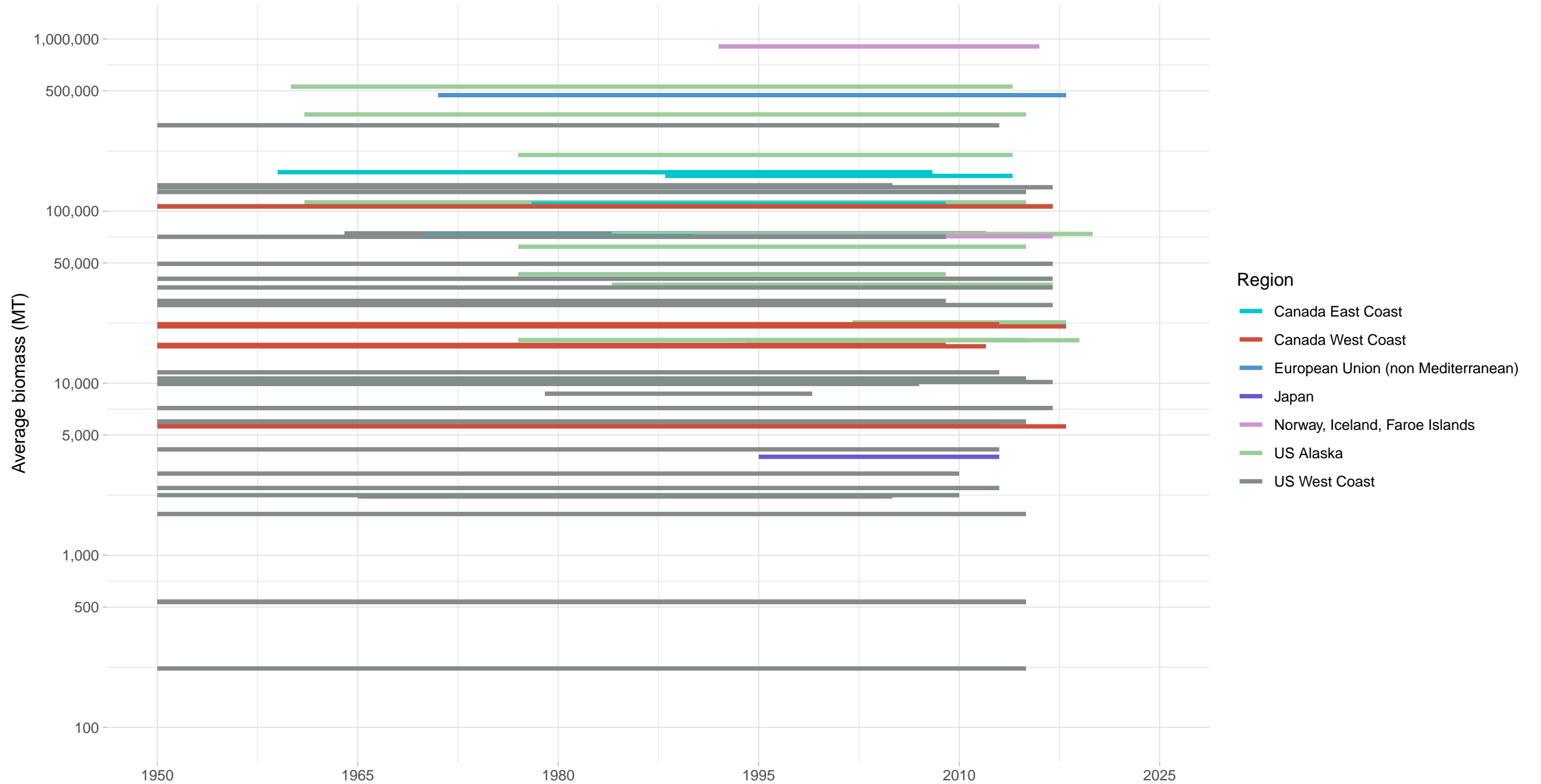
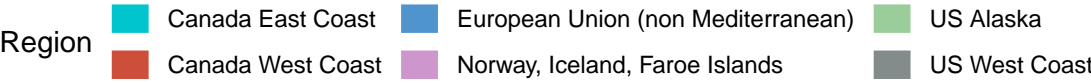
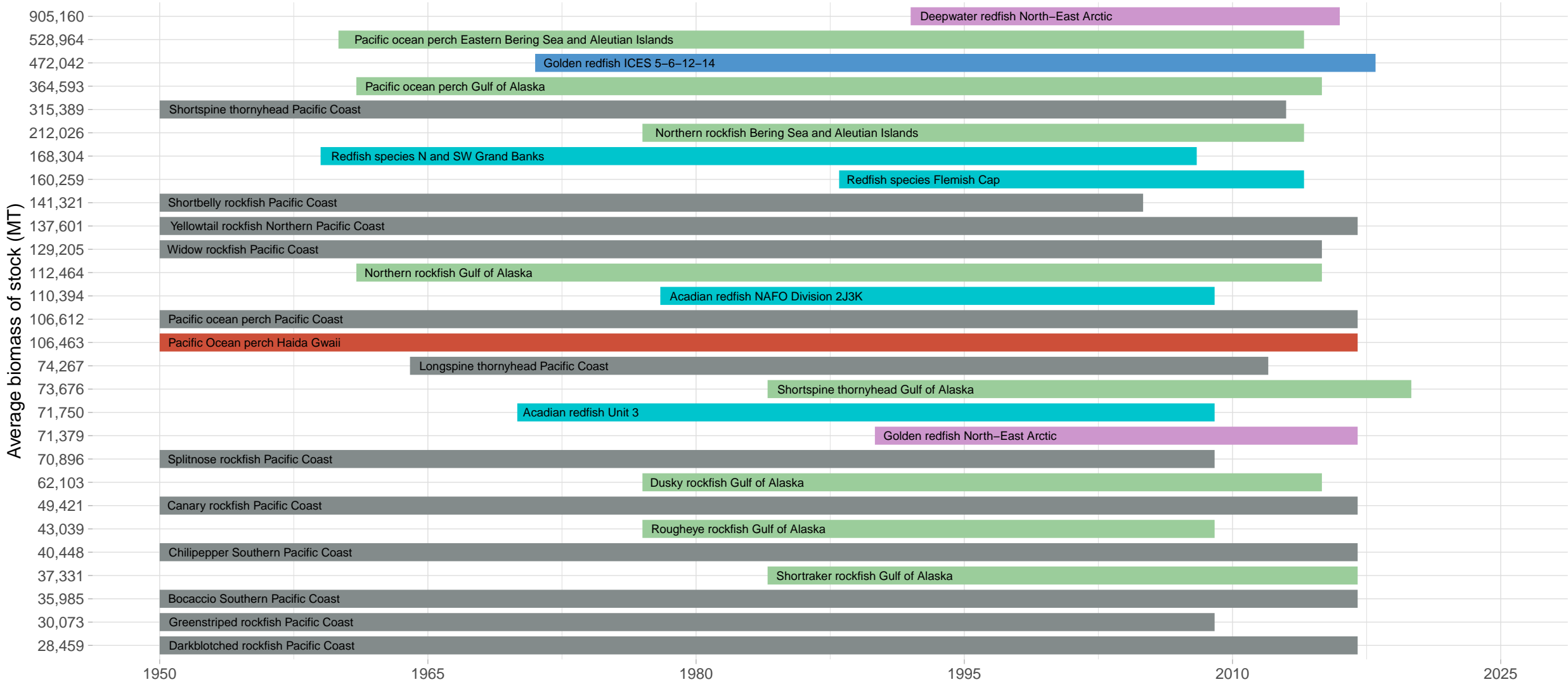


# Biomass Coverage in Sebastids Taxonomy Group



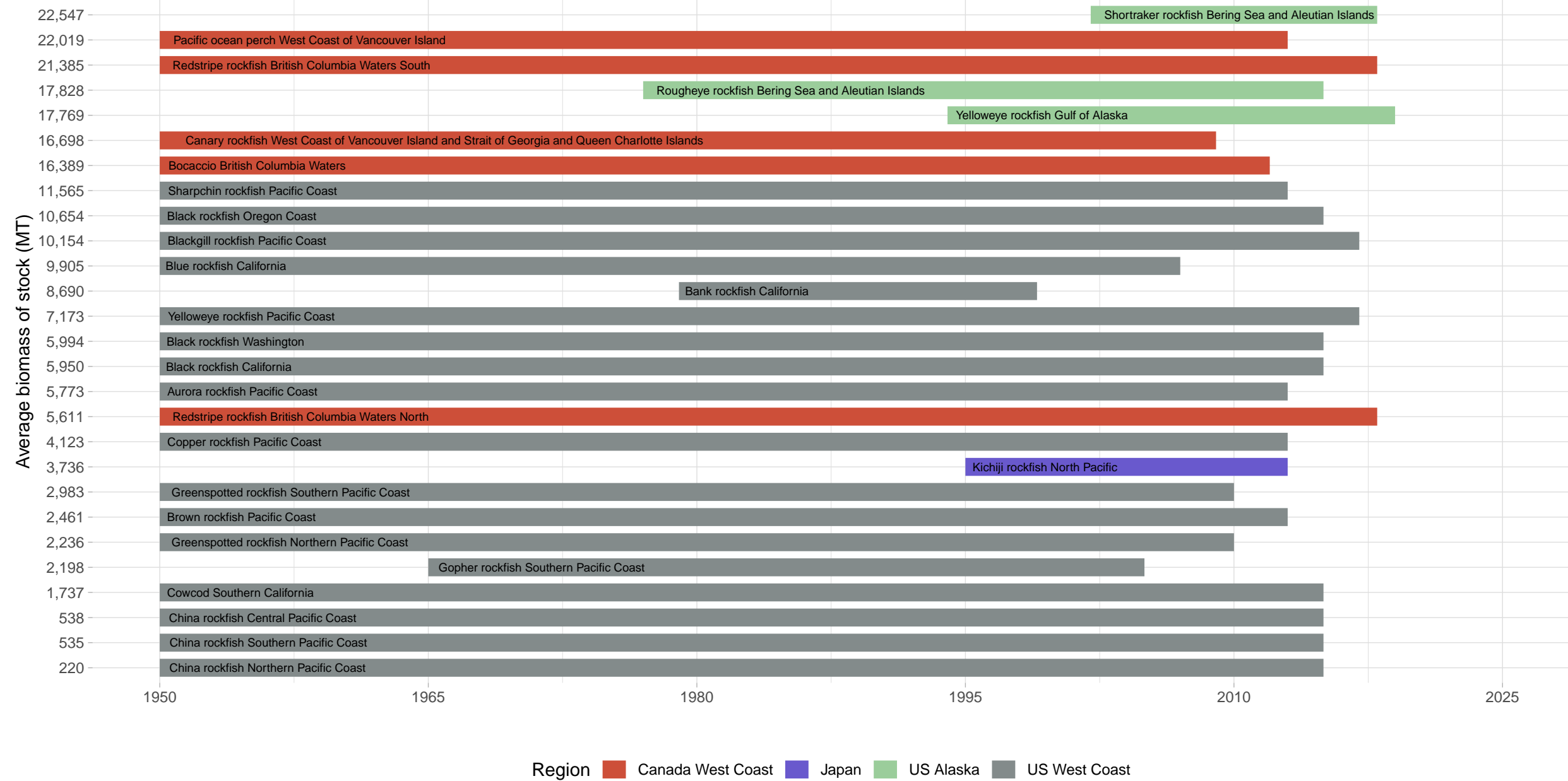
Biomass Coverage Over Time in Sebastids Taxonomy Group

Stocks with highest average biomass



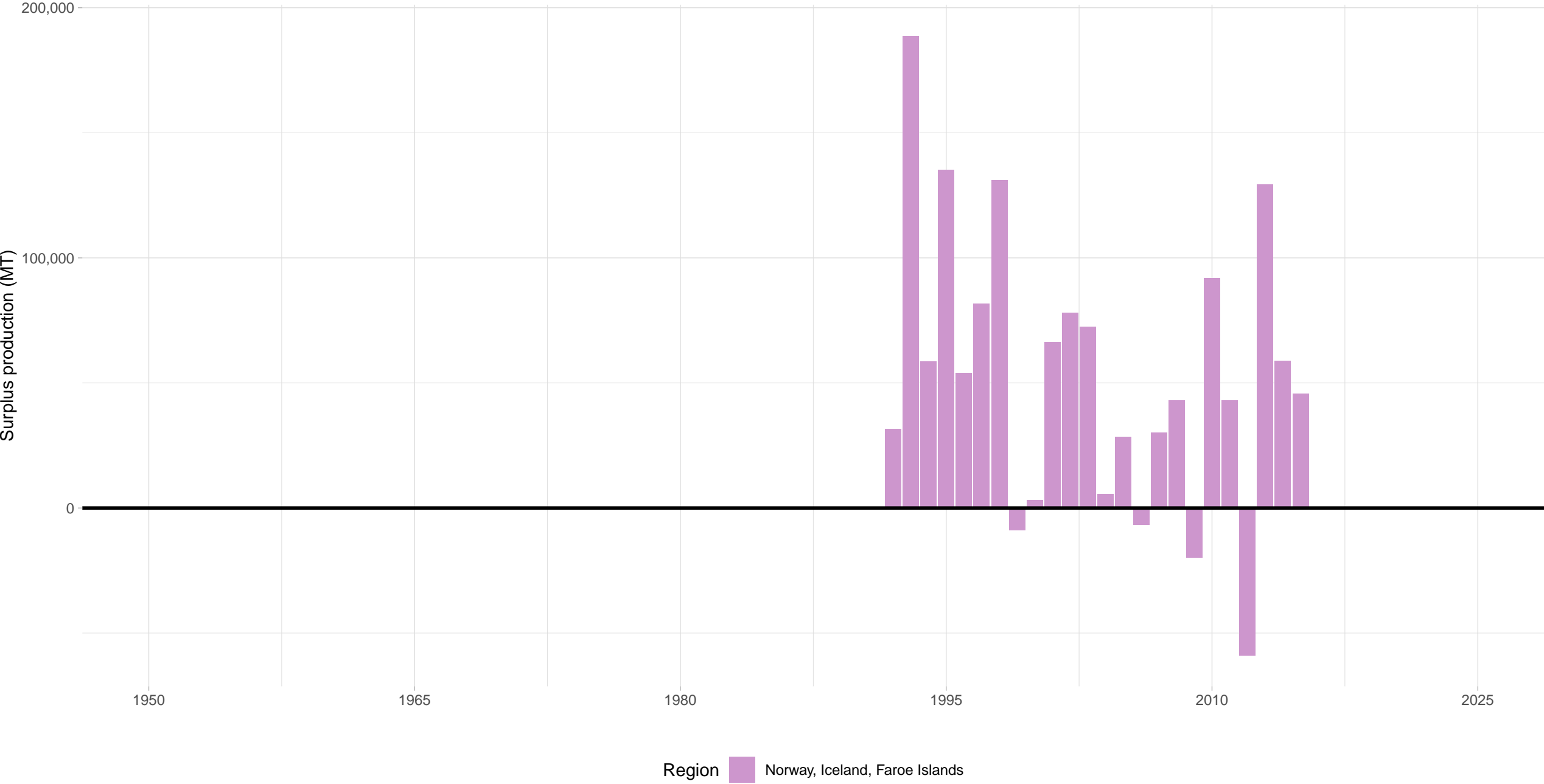
Biomass Coverage Over Time in Sebastids Taxonomy Group

Stocks with lowest average biomass



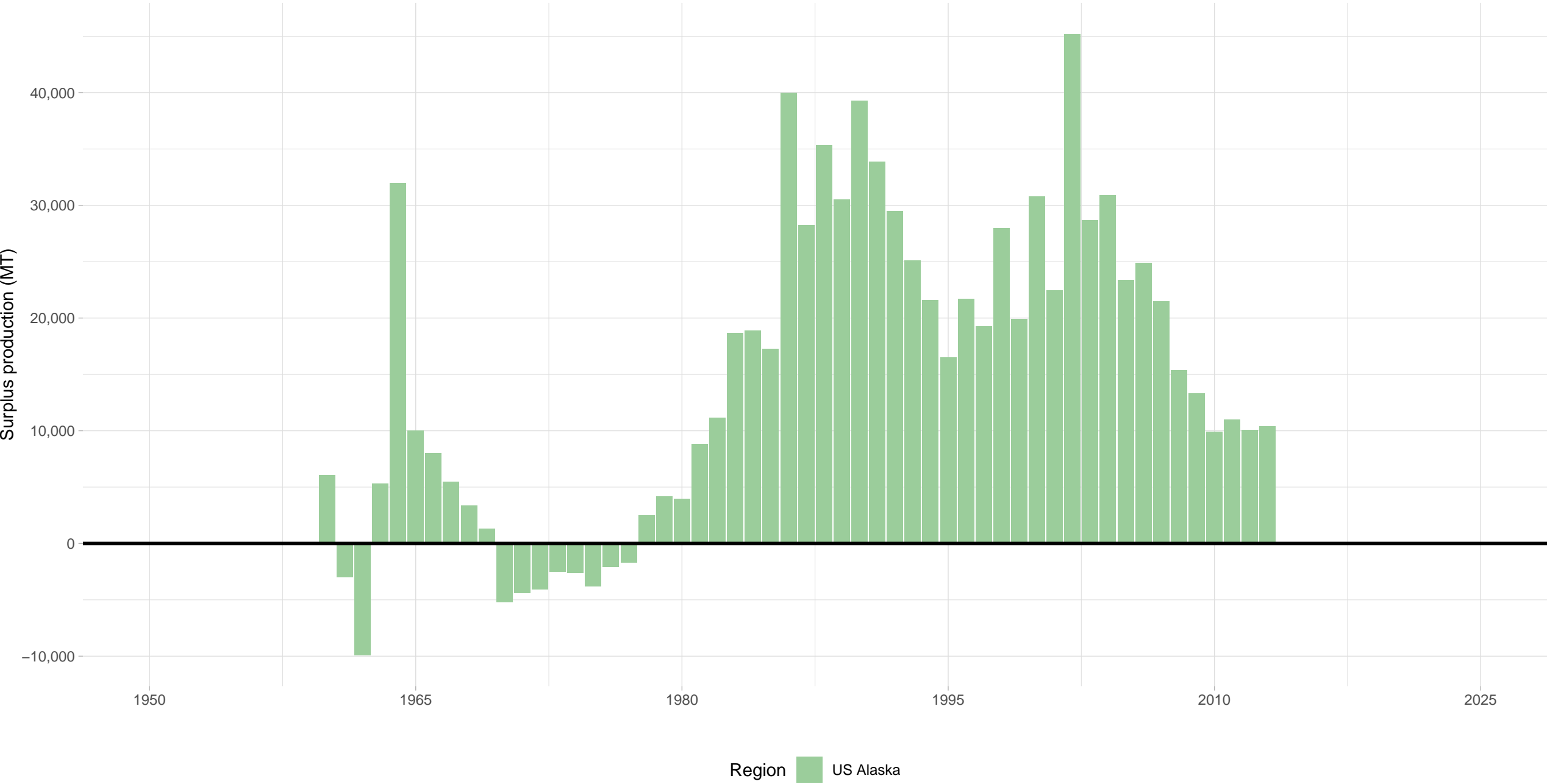
Deepwater redfish North–East Arctic – Sebastids Taxonomy Group

Stock represents 13% of average absolute surplus production



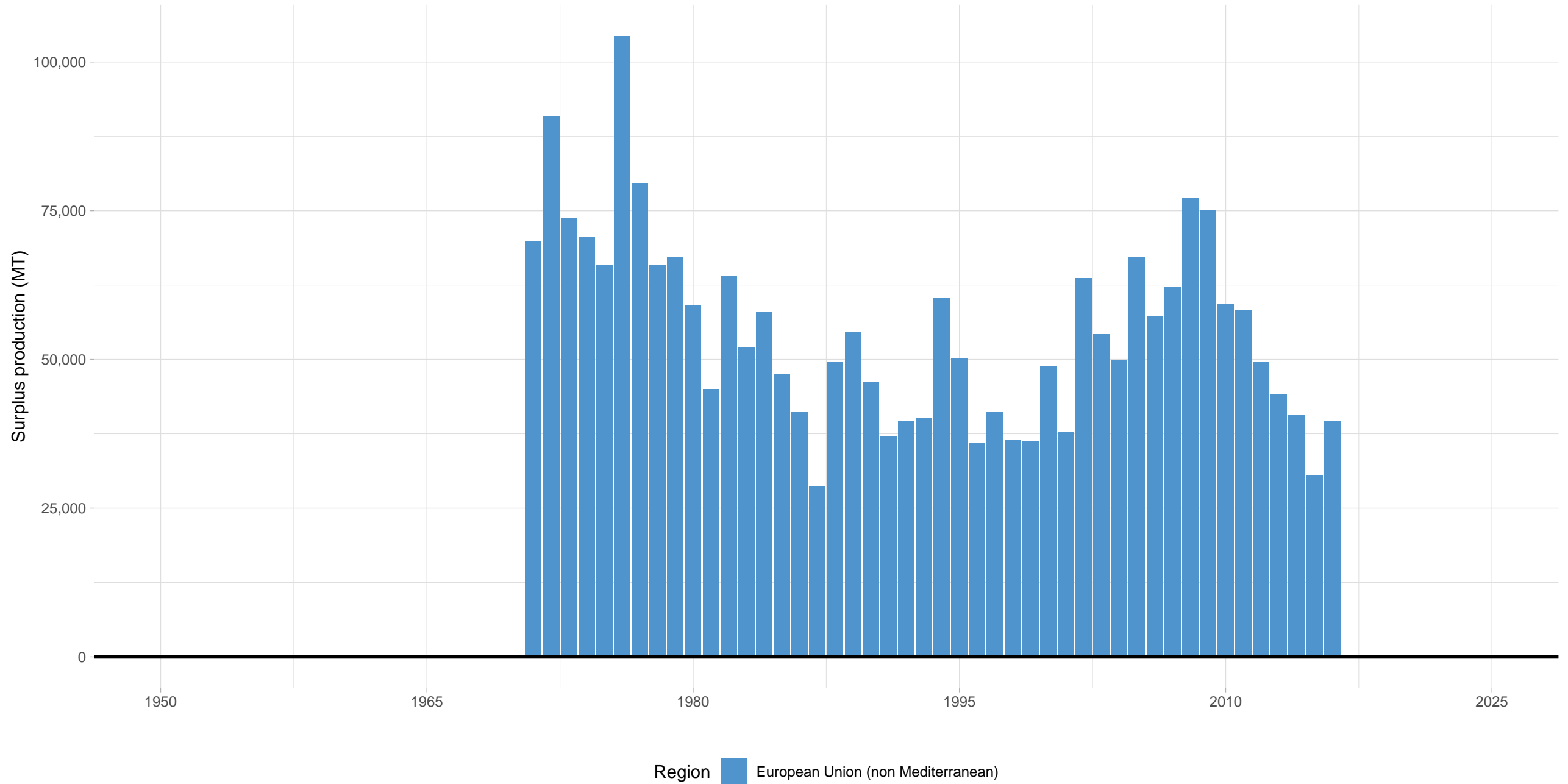
Pacific ocean perch Eastern Bering Sea and Aleutian Islands – Sebastids Taxonomy Group

Stock represents 3% of average absolute surplus production



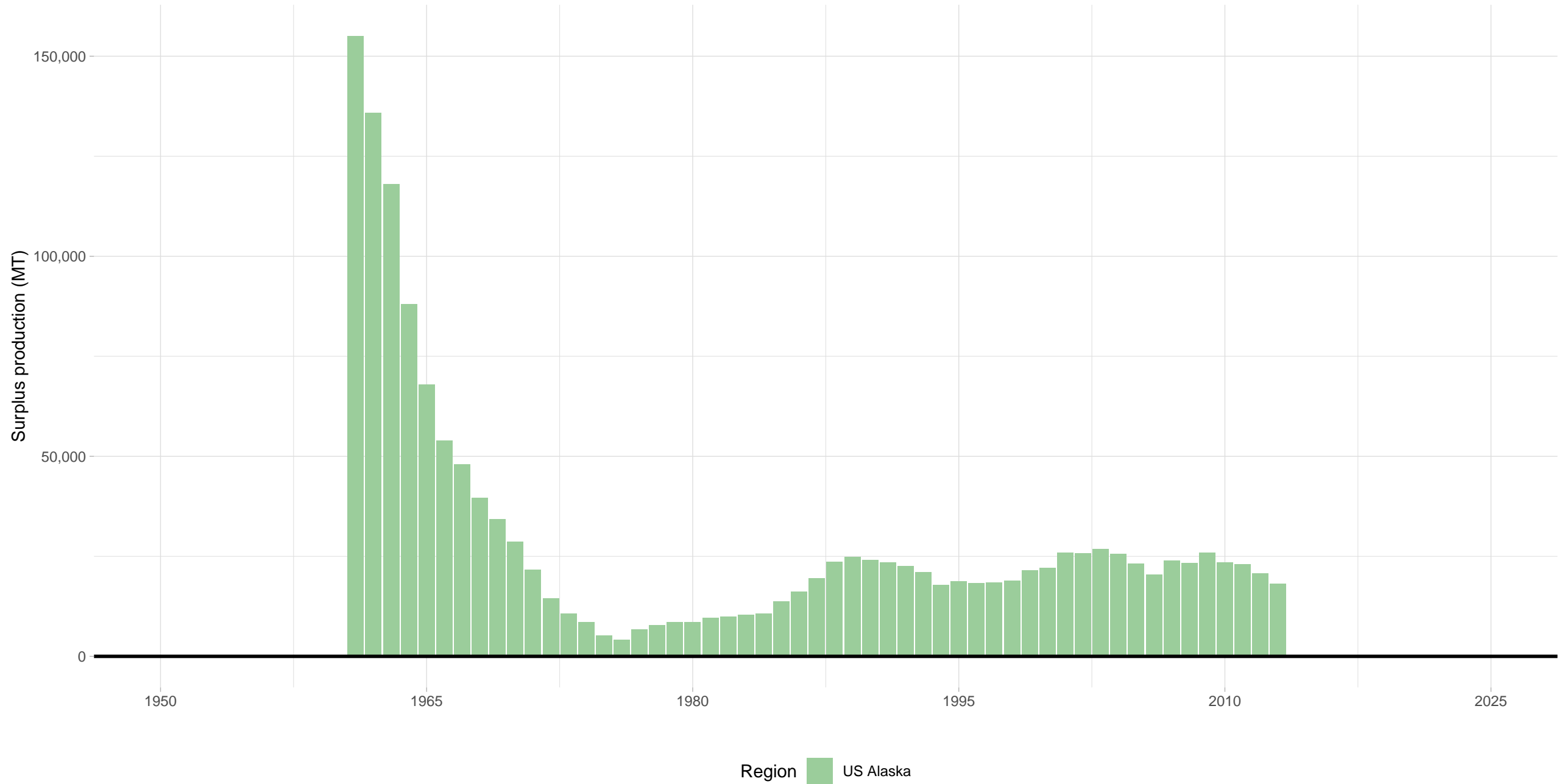
# Golden redfish ICES 5–6–12–14 – Sebastids Taxonomy Group

Stock represents 12% of average absolute surplus production

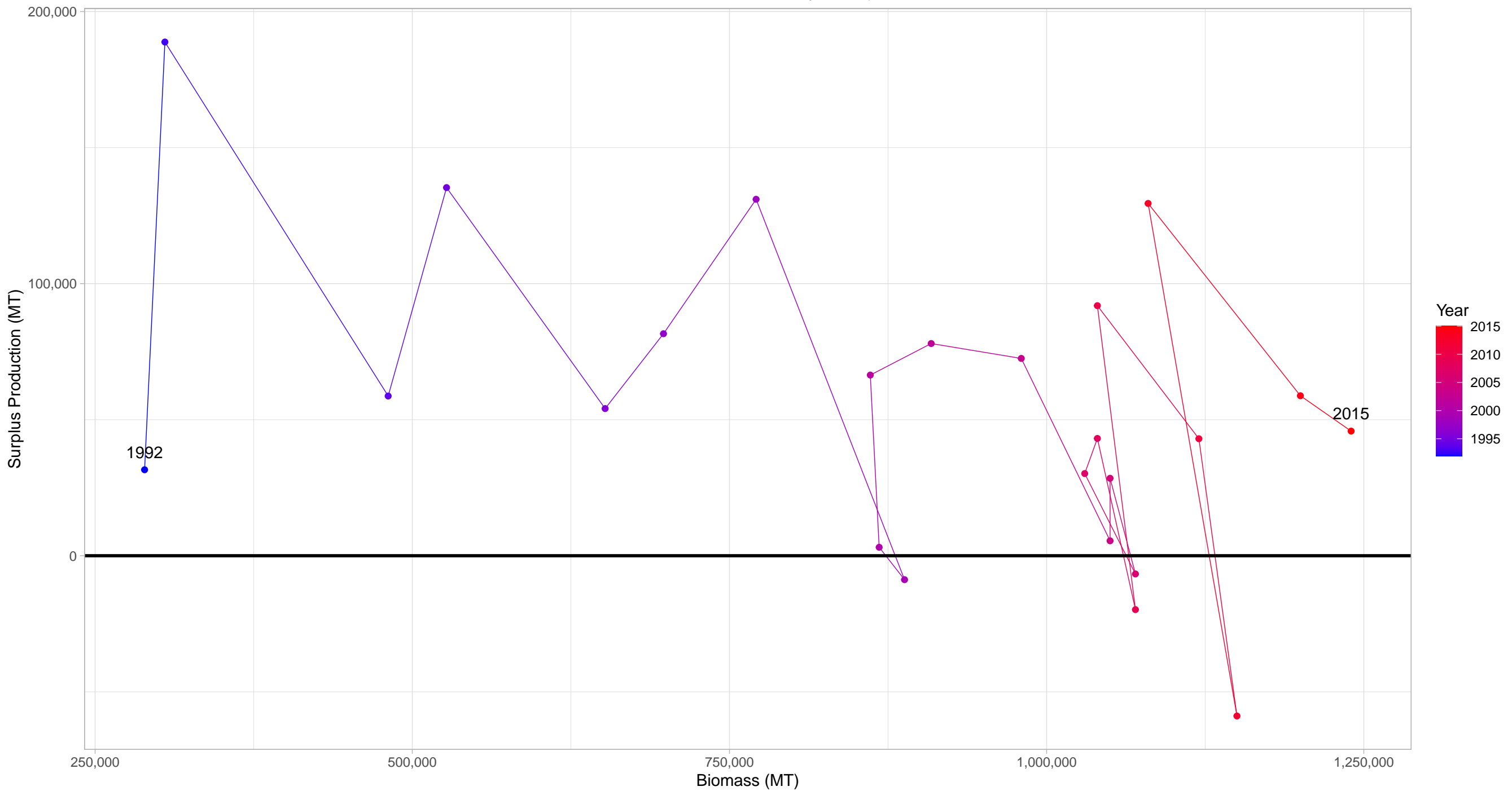


# Pacific ocean perch Gulf of Alaska – Sebastids Taxonomy Group

Stock represents 6% of average absolute surplus production

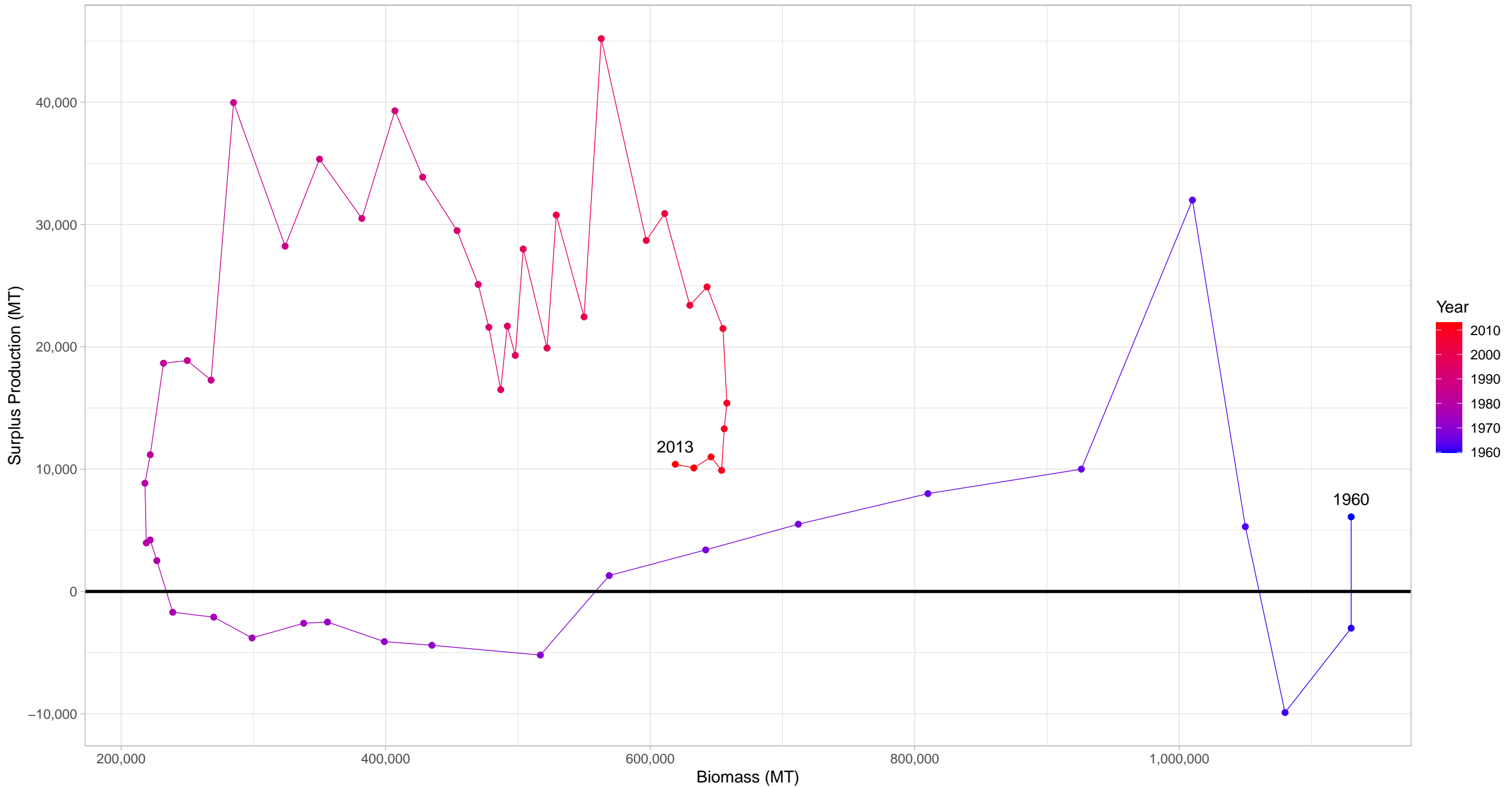


# Deepwater redfish North–East Arctic in Sebastids Taxonomy Group



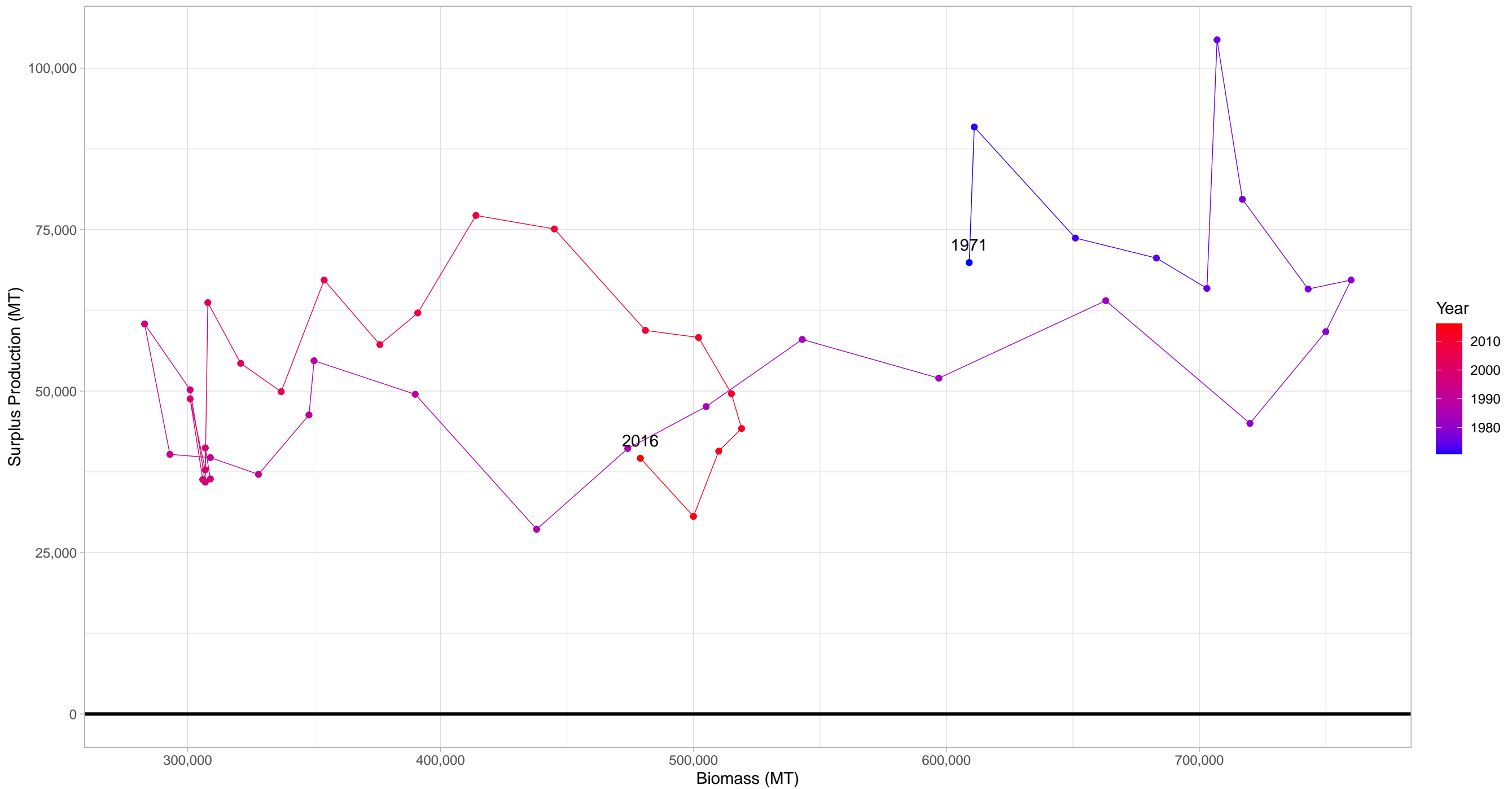


# Pacific ocean perch Eastern Bering Sea and Aleutian Islands in Sebastids Taxonomy Group

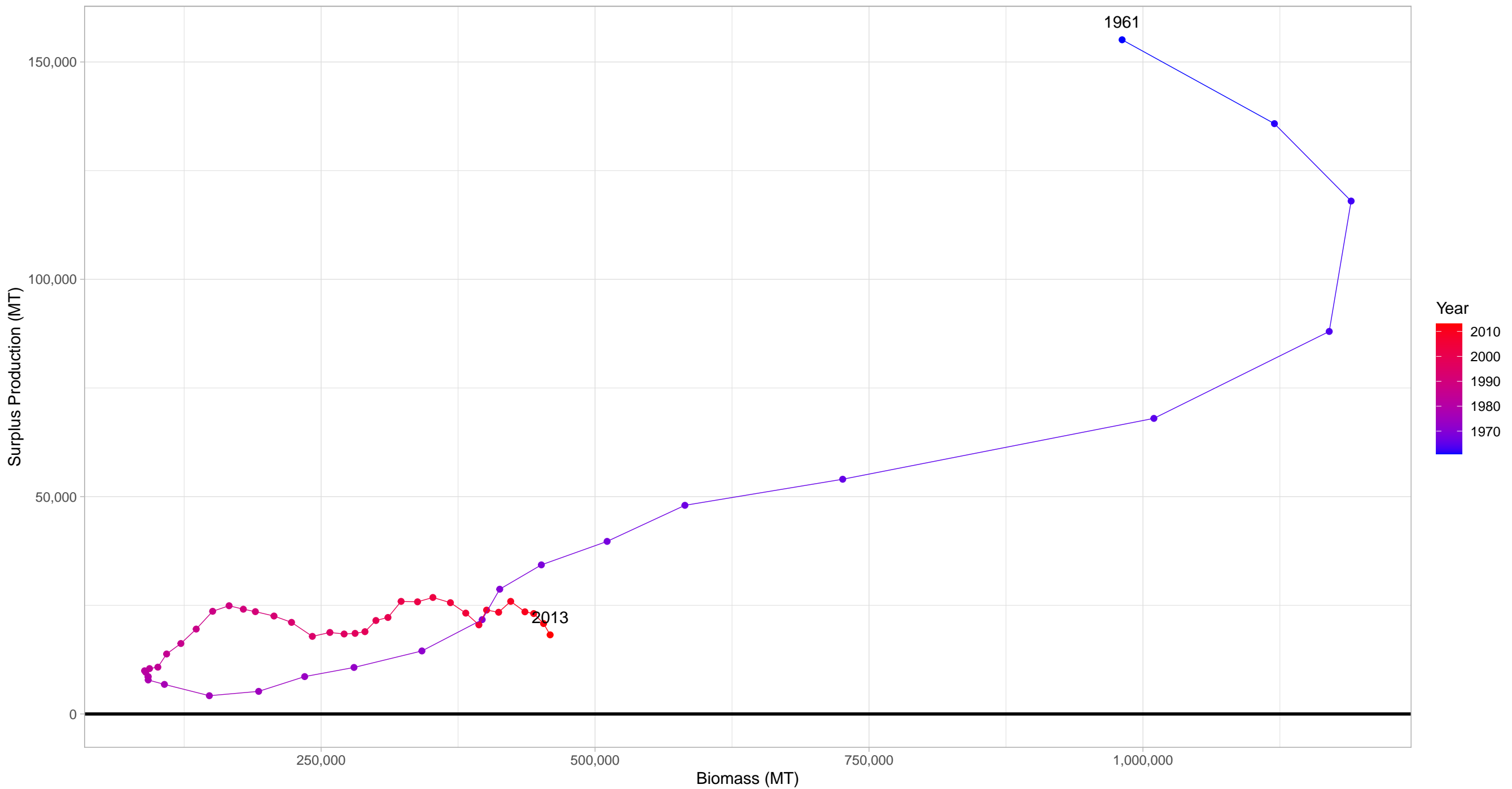


First and last years with recorded surplus production are labeled

# Golden redfish ICES 5–6–12–14 in Sebastids Taxonomy Group



# Pacific ocean perch Gulf of Alaska in Sebastids Taxonomy Group



First and last years with recorded surplus production are labeled